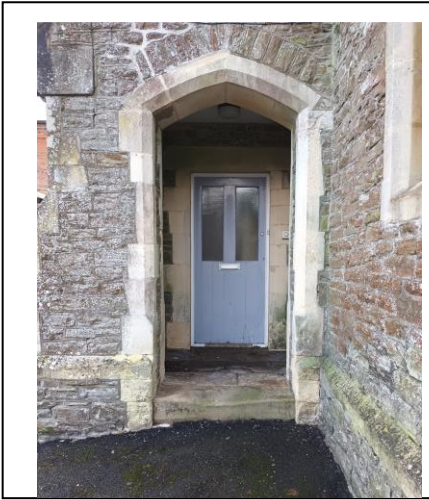


Report on visit to Station Masters House in Battle



On Wednesday 23rd February on a very cold and windy morning, Cllrs Burton Cook Favell Kiloh and Sharman went on a visit the station masters House.

South East Community Rail Partnership (SECRP) is looking to re purpose this building for community use and needed to know if we could offer our support for this project.

Our remit was to visit and see what, if any uses could be suggested for the rooms within.

It is obvious that the accessibility is a real issue although a ramp would overcome the step into the property. The toilet and the kitchen are inaccessible for a wheel chair user but the Disabled toilet on the platform could be accessed using a radar key which could be provided. Other toilets are provided within the Station booking Hall but only when the said booking hall is open. However the wall between the

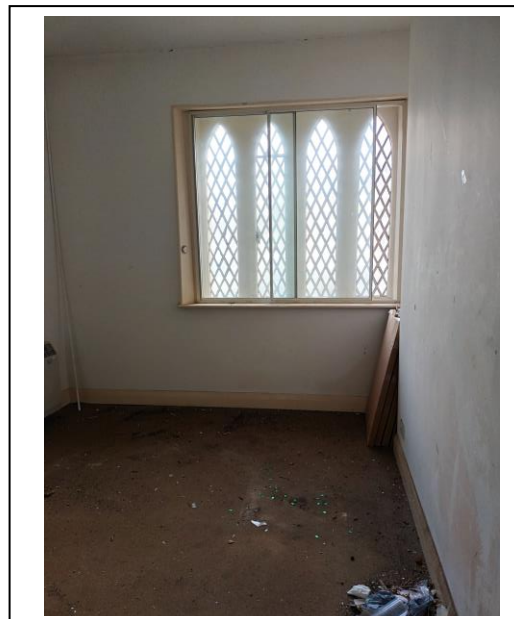


kitchen and the right hand side adjacent room could be removed giving good access and a larger meeting space.

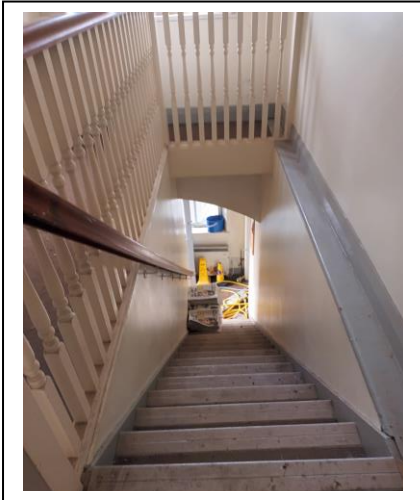
The Councillors felt this could be a meeting room for a book club, discussion group or possibly an exhibition space for a picture gallery or photographic space for railway historians.



The Councillors also discussed the lack of catering facilities at the station since the previous vendor had retired and the following pandemic crisis, and wondered if this could be a venue for a new venture.

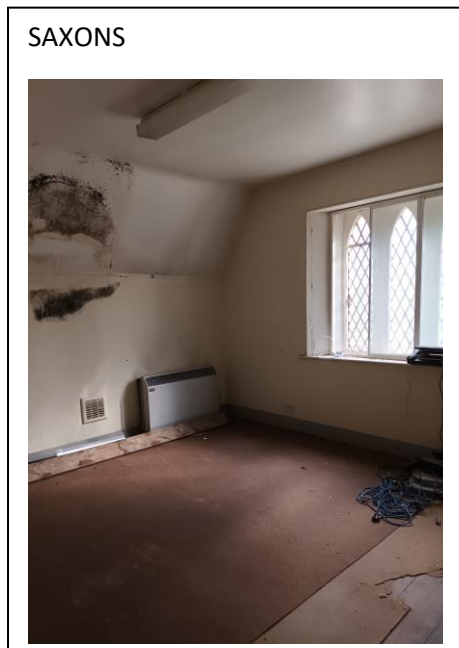


The stairs to the upper floor were very narrow and steep and Cllrs could not see a way for a stair lift to be added which would make the upper floors inaccessible for some visitors.



Upstairs there are three rooms one of which the Councillors felt might be able to house the Town Model, again the other two rooms could be meeting rooms or exhibition space.

In general the Councillors felt that the benefits of bringing a building back into use would be a positive step, although there is no money available for such a project they could offer support to the SECRP should they need it for a grant bid.



It was also commented that this would be a fabulous holiday destination for a rail enthusiast too !! In which case accessibility would not be an issue.

The Councillors then went on to consider the difficult issue of platform access and wonder if , given the unsightly and distinctly not heritage Mast and Associated electrical cabinets , a new request for a lift to access the platforms could be made and supported by us.