

Newsletter

Edition 22

Autumn/Winter 2022

Difficult discussions on Budgets Residents views welcomed

The Finance & General Purposes Committee recently held initial **discussions on the precept** (the Council tax element for Battle residents) requirement for 2023-4 for recommendation to Council.

We are extremely conscious of the **financial burden for so many people** and, with the current rate of inflation at over 11%, each item of expenditure was carefully considered and reductions have been made wherever possible.



Additionally, it is proposed that non-priority items are not taken forward at this time in an attempt to keep the increase around 3% - approximately 16p per week for a band D property.

Schemes postponed include **play equipment for toddlers** at the recreation ground and **resurfacing of shingle pathways**, which prove challenging for wheelchair and pushchair users, at the cemetery. A **reduction in the number of LED replacement street lights** has also been made to help reduce the expenditure. To **progress infrastructure schemes** such as a shared use path between Saxonwood Road and Park Lane (at Battle Abbey car park) and footways at Marley Lane and Netherfield, funding from the local **Community Infrastructure Levy funds** will be considered.

The Committee felt this will be the best solution for the current financial situation. **Your comments are sought.**

However, **Rother District Council (RDC)** is also experiencing serious financial challenges and have asked the Town Council to consider **taking on the responsibility for some of its discretionary services**. At this time, the grounds maintenance of all its areas and the public toilets in Mount Street are being offered.

continued on page 2

Inside this edition

Budget considerations	2
Chairman's Message	3
South & South East in Bloom	4
Thoughts and Thanks	5
Sussex Police and Fire & Rescue Service Advice	6
Warm Spaces	7
Battle Cemetery	8-9
Community items	10-11
County Report	12
MP Report	13
Battle Library	14
Advertisements	15
Council Meetings / Councillor contact	16

Contact Us

01424 772210

enquiries@battletowncouncil.gov.uk

There is **no financial reward** offered with the 99 year lease for the open spaces but it would allow Council to maintain the areas within its own preferred regime. These include larger areas such as Netherfield and Coronation Gardens play and recreation areas, Kingsmead open space, Watch Oak and Darwell Woods. There are also other smaller, isolated areas by the RDC car parks, Marley Lane and Harrier Lane. **These can be considered individually.** No sites are available for development.

As many residents will know, Council took on responsibility for urban verge cutting from East Sussex County Council by annual agreement two years ago. If devolvement from RDC was agreed, as a minimum, it is considered that an **additional member of grounds staff would need to be employed** to assist with this maintenance work. At present rates, this would result in an increase of 21p per week for a band D property. It is also acknowledged that the play area at Netherfield is in great need of updating, although grant funding may be possible towards the cost of this.



In relation to the **public toilets in Mount Street**, there may be some initial financial assistance from RDC to update the facility but ongoing maintenance would then be the responsibility of the Town Council.

The public toilets and grounds maintenance are discretionary services and Rother District Council could remove them.

During next year's discussions will be the renewal / replacement of the existing **festive lighting contract**. This currently costs approximately £12,500 per year.



There will be a local election in May 2023 and the Council will need to be prepared to make decisions which could impact on your Council tax. **We are therefore asking your views, by 15th January 2023**, on priorities for the next few years:

- **Devolvement of grounds maintenance**
- **Devolvement of Mount Street public convenience**
- **Provision of festive lighting**
- **Resurfacing of cemetery shingle pathways**
- **Additional toddler play equipment**
- **Replacement LED street lights**
- **None of the above to keep precept increase to a minimum**

Please email your comments to: enquiries@battletowncouncil.gov.uk

or write to: **The Almonry, High Street, Battle, TN33 0EA**

A Message From the Chairman

On behalf of Staff and Councillors at Battle Town Council, I would like to **acknowledge the support of our town community** for the two major events at Battle Abbey in connection with the **death of Queen Elizabeth the Second**: the **proclaiming of the new King** and the moment of reflection. I heard many stories from people who had braved the queues and waited for many hours to file past the coffin.

Many shops produced touching and poignant displays, some offered spaces for residents to meet and share their distress and many closed for a part or all of the day of the State Funeral. **The Churches remained open** for people to light candles and sign the book of condolence. At the Almonry building, Officers and Councillors were on hand with tissues and a listening ear for those who wanted to sign the book displayed there.

As Mayor of Battle, I am invited to many functions where I meet and network with other Mayors and Chairmen of Councils and it is interesting to find out what other towns do for their residents.



**If there is something you think we might consider doing please let us know.
Of course, we can't promise but we encourage new ideas.**

Locally, I was pleased to be asked to hand out medals at the **Battel Bonfire Boyes' September Fun Run**; speak at a **Battle Abbey Assembly**; attend the **Hastings Day celebration of successful volunteer and business initiatives**; and officially **open the new care home** in Battle.



With the changeable autumn days we have been able to enjoy **Bonfire Night** and to pay our respects at the **Armistice event** on the Abbey Green; and the **Parade and Church Service for Remembrance Sunday**.

As winter begins, we watched as **Santa switched on the Christmas Lights**. My special thanks to Councillors Jill Gygell and Margaret Howell, the Town Council took part in the **St**

Mary's Church Christmas Tree Festival. We will also be involved with Battle's **late night shopping**, as **Santa welcomes children at the Almonry's** Old Hall / Buttery. The Council joins with the Chamber's Christmas Committee to support **the Santa tours**.



We are so fortunate that Battle does all these events so well and the **community really does come together** to make the whole town become a winter wonderland.

**If you would like to be more involved with any of these events
please ask at the Council offices for contact details or look on the Battle website
<https://battleeastsussex.co.uk/>**

With any luck I'll meet some of you out walking soon and, in the meantime, may I wish you all a peaceful and enjoyable festive season.

Cllr Vikki Cook, Chairman and Town Mayor

THANK YOU TO EVERYONE who contributed to the Council's Quest for Gold



The South & South East in Bloom (SSEiB) competition is part of Britain in Bloom and covers the counties from Kent to East Wiltshire. Its name rather implies that it is all about summer bedding displays and hanging baskets. However, it is now as much about caring for our environment and wishing to see the community and community volunteers becoming involved in caring for their place.

Back in 2019, Battle was awarded Gold, received the East Sussex County Award and was nominated to represent SSEiB in the Britain in Bloom finals the following year. Sadly, Covid thwarted the Council's opportunity to take part in the prestigious competition. This year the Town Council entered Battle in the Small Town category and Battle Cemetery in the Cemeteries and Crematoria category.

Last autumn, members of the Council's Working Group set to work on its task of *Going for Gold*. The Chairman of SSEiB was invited to address the Town Forum and the representatives of the town's organisations in attendance discussed ways to impress the judge. In fact, there was already a great deal happening in Battle that would gain points in the competition because so many volunteers are involved in making our town special, but of course there is always room for improvement.

Over 20 pages of Judge's Notes, documenting and illustrating the work and achievements of all the amazing volunteers and organisations that help to make Battle so special, were produced.

To ensure that the town looked clean and tidy on judging day in July, Councillors helped with some extra weeding and tidying in the cemetery and the recreation ground. **Many residents and businesses in the High Street ensured that their frontages were spick and span in readiness** and Members of Wild About Battle worked hard to remove weeds along Abbey Court well into the evening before judging!



On judging day, the cemetery was judged first and, after a brief presentation, a variety of questions were asked and, although there was no hint of how we had done, he seemed impressed that Shania (the member of grounds staff for the cemetery) looked after such a large area so well. The judge's chauffeur then arrived (Steve, another member of the grounds staff, in the Council Mule!) for the tour of the town.

Everything that the judge sees can be judged, but specific areas were selected for him to visit. From **Battle Cemetery**, the judge went to **St Mary's churchyard** where members of the Eco Church explained their project. At the **Walled Garden in Battle Abbey** he met the member of staff who oversees the wildflower planting. The judge stopped at **Abbey Green** to view the wonderful displays planted and cared for by Beautiful Battle and enhanced by Battle Yarn Bombers creations. Along the **High Street** he saw the troughs and hanging baskets before stopping at **St Martin's** to view the window boxes. The judge walked up **Abbey Court** to see even more superb planting by Beautiful Battle and stopped to inspect the Incredible Edibles grown by the Guides and Brownies before talking to one of the green fingered residents of Abbey Court. At **Caldbec Hill Nature Recovery Area**, the judge met a representative of Wild About Battle, who look after the area, and Battle Yarn Bombers. He then walked around the top of the **recreation ground** to see the environmental planting, including the trees planted as part of the Queen's Green Canopy. The chauffeur parked in Rue de Bayeux so that the judge could view the colourful planting at **Wellington Court** before finishing his tour in the **Courtyard at The Almonry** with the Chairman of Beautiful Battle.

Judging was based on how we tackle everything from horticulture, conservation and sustainability through to litter, graffiti and anti-social behaviour, and the positive impact it all has on our community spirit and civic pride. We then had to wait until September to find out the results.

Battle Cemetery was awarded Silver Gilt and the Council's Quest for Gold for the town was successful!

However, **that isn't the end of the story**. In February, the Mayor had written to schools in the parish, encouraging them to enter the S&SEiB Schools Environmental Challenge, but the Council wasn't aware of any entries, however ...



Claverham Community College entered the Schools Environmental Challenge and was the East Sussex winner
CONGRATULATIONS!

Writing Competition 2022

Due to staff shortages the autumn newsletter could not be published, so the reminder was missed. So, to be fair, we have extended the closing date for the adult's category to 31st December 2022.



**This year's title is "Beginner's Luck"
and the entry must be exactly 1066 words, not including the title.**

A trophy, which remains the property of Battle Town Council, is presented annually to the winner.

The winning entries will be published on the Battle Town Council website and may be published in the Council Newsletter.

Park and Ride for Battle?

An item on the Council's Planning & Transport Committee Action Plan is to seek additional sites for vehicle parking. As an alternative, to alleviate traffic in the High Street, consideration has been given to the provision of a park and ride scheme.



Council welcomes suggestions for a suitable site for this provision or for vehicle parking.

Festivities 2022

We would like to thank Littledown Christmas Tree Farm for supplying the Town's beautiful **Christmas trees** and Nick Acuna and Don Gray for assisting with the **installation**. We are delighted that AC Towner Ltd, Battle Museum of Local History, MRA Ltd and Mr & Mrs Venn, Parker Building Supplies have **sponsored this year's trees**.



The wonderful **festive lighting scheme** provided by Gala Lights is now in its fourth year of a five year agreement. We are delighted that they continue to provide such joy to the community.

Next year Council will need to consider options for the 2025 season.

**Please look out for Santa from 6pm between
Monday 12th December and Thursday 15th December.**



Advice from Sussex Police

Now the darker evenings are upon us, here are some **top tips to help keep your home secure**:

- **Close and lock all your doors and windows**—even if you're only going out for a few minutes
- **Double-lock** any door
- Make sure that any **valuables are out of sight**
- Keep **handbags away from the letterbox** or cat flap and **hide all keys**, including car keys, as a thief could hook keys or valuables through even a small opening
- **Never leave car documents** or ID in obvious places such as kitchens or hallways
- In the evening, **shut the curtains** and leave a light on
- If you're out all day, then it's advisable to **use a timer device** to automatically turn a light and a radio on at night
- Set your **burglar alarm**
- Make sure the **side gate is locked**
- **Lock your shed** or garage
- **Lock your bike** inside a secure shed or garage, to a robust fitting bolted to the ground or wall, like a ground anchor

The impact of burglary isn't just financial; it can also have a significant impact on your emotional well-being and sense of security. If you have been a victim of a burglary, support can be found at

<https://www.victimsupport.org.uk/crime-info/types-crime/burglary>



East Sussex Fire & Rescue Service

Save Safely!

With winter rain and chills sweeping in and people starting to think about different ways to save money, East Sussex Fire and Rescue Service has launched a new safety drive - Save Safely.

The Service has gathered together a few ideas which you might want to consider. Not only could these save you a few pennies, they will help reduce the chances of a fire which in itself can be expensive, disruptive and distressing.

- **Switch off at night!** If you're asleep you are much less likely to spot a small problem (smoke coming from a socket) before it becomes a fire. Before you go to bed, or go out, check the living room, the kitchen, home office, your bedroom and so on and switch off! You can save energy this way too!
- **Close doors.** It's amazing how much heat can disappear out the door, and by keeping doors shut, you also reduce the chance of fires spreading from room to room.

Check out the support available. Did you know the Service can also help with free advice, specialist safety equipment and even smoke alarms?

Find out more at www.esfrs.org/savesafely



keep warm and well
in East Sussex

Support is available across East Sussex to help you keep warm this winter

Enquire online at:
www.warmeastsussex.org.uk

Phone: 0800 464 7307
Text WARM to 80011

Logos: East Sussex Energy Partnership, East Sussex Council, NHS, and others.

A Warm Space for You

If you are worried about winter heating bills and need a warm space to sit for a few hours each day, the good news is that here in Battle every week day and some Saturdays, you will find a warm welcome where you can sit and read a book, meet a friend, catch up on your e-mails or knit and natter.

Each warm welcome space will be:

Free - Warm Welcome spaces will be free to enter.

Warm - Warm Welcome spaces are heated and may be able to provide Basic refreshments such as tea/coffee.

Welcoming - Warm Welcome spaces are inclusive, non-judgmental spaces where everyone can expect a warm welcome from staff and volunteers.

Safe - Every organisation setting up a Warm Welcome space will abide by their usual safeguarding policies and hygiene rules.

Find your warm space here:-

Mon	Tues	Weds	Thurs	Fri	Sat
Battle Baptist Church 11am-2pm	Battle Baptist Church 11am-2pm	Battle Baptist Church 12-2pm	St Mary's Church Centre 2-5pm		
	Battle Library 10am-4pm	Battle Library 10am-1pm	Battle Library 11am-6pm	Battle Library 10am-5pm	Battle Library 2-4pm
	The Almonry 12-4pm	Emmanuel Centre 10am-2pm			
Abbey Hotel from 11am	Abbey Hotel from 11am	Abbey Hotel from 11am	Abbey Hotel from 11am	Abbey Hotel from 11am	

Battle's Cemetery

The Cemetery is owned and managed by the Town Council on behalf of the residents of Battle Civil Parish.

In 2014, the Council decided that it would be prudent to further extend the cemetery into the remaining available land. However, Members wanted to offer more than grassed areas either side of a central driveway. The Council worked with Cemetery Development Services Ltd over many months to undertake the necessary surveys and to finalise **a design that provided wider choice for residents**. Planning consent was received in 2015. The project went to tender and Agrifactors (Southern) Ltd began the landscaping in July 2016.



At this time, the main chapel was used occasionally for funeral services, but it was in need of some 'TLC'. The other chapel was being used as a store and rest room for the Council Grounds Staff. Both chapels were renovated and heating was installed. A kitchenette and an accessible toilet were incorporated in the Ceremonies Room and an access ramp for wheelchair users has been built.

The New Cemetery and updated facilities were opened by Huw Merriman MP in June 2017

The old pews were moved to the Ceremonies Room and replaced by chairs donated by English Heritage. Although the number of seats increased, there is now space for a coffin to be placed within the body of the congregation during funeral services.

The **Chapel** is open during weekdays for quiet prayer and contemplation. It can be booked for Funeral or Memorial Services. There is seating for about 40 people.

The **Ceremonies Room** is ideal for funeral gatherings as well as ceremonies to Celebrate a Life. The seating is flexible and the tables can be removed and extra seating provided. This space can also be **hired for meetings**.



There are **marked parking places** along the drive in the New Cemetery, just below the Rose Garden. If necessary, cars can be parked along the main drive, but visitors are requested not to park on the gravel paths.



Although there are standard plots in the **New Cemetery**, there are more spacious plots in the **Rose Garden**, which has a central path edged by Olivia Rose Austin hedges. There are also **private plots** of various sizes, for individuals or a family, which may have low hedges planted around them.

Interments in the **Natural Burial Area** can be around a specimen tree or along the edge of the shaw. This area is maintained as a wildflower meadow with mown informal access paths.



A discrete circular **Children's Cemetery**, within the New Cemetery is enclosed by a low hedge.

In the **Lower Cemetery**, which is accessed down the path on the left of the main drive, there are a few ashes plots remaining, each to be marked by a tree and memorial plaque. There is also **an area where ashes may be scattered**.

A carved oak post for memorial plaques in the Ashes Scattering Area and a memorial for the Babies of Battle who were laid to rest in unmarked graves in years gone by, were **specially commissioned from a Sussex wood carver** by Battle Town Council.

The owner has the **right of burial for 100 years** from the date of purchase. Please look on the **Council's website** for further details or contact **Jane de Garston at The Almonry** to discuss your needs.



Grave spaces and ashes plots can be purchased in advance of need.



Even if you **don't live in Battle Civil Parish, you can be laid to rest in our wonderful Cemetery**. Fees for non-residents will generally be doubled, though not necessarily for past residents of the parish.

There are several **wildflower areas** where green-winged orchids, common twayblade and many other flowers attract a large number of pollinators, including butterflies and bees. Beautiful trees provide a home for a variety of birds and also the hundreds of different species of insects on which they feed. A **Tree Trail** is available to guide you past notable specimens such as the tulip tree, small-leaved lime and trembling (quaking) aspen.

Battle Cemetery is not only a beautiful place to be laid to rest, but is also a tranquil place in which to wander, sit and reflect or enjoy nature.



The Council organises **Guided Walks in the Cemetery**. These have included talks about trees, bats, butterflies and wildflowers. It is hoped that a tour of interesting graves will be arranged in the new year. Guided Walks are followed by refreshments in the Ceremonies Room, which are served by the Friends of Battle Cemetery.



They **clear dead flowers, tidy graves that are no longer cared for, weed the Gardens of Remembrance** and then have a cuppa in the Ceremonies Room. They also provide refreshments at the weekend near to **important family days**, such as Mothering Sunday, as some visitors that have travelled long distances very much welcome a comfort break.

Friends of Battle Cemetery meet on the 1st Wednesday of the month between 10.00 and 12.00.

Battle Twinning Association

During a recent visit to our **twin town of St Valery-sur-Somme**, there was a reception for the St Valery and Battle Twinning Associations in the newly restored Dépôt des Sels (the 18th century Salt Warehouse)



presided over by the **Mayor of St Valery, M. Daniel Chareyron**. After a lecture about the important salt production in the region, the **St Valery Community Tapestry**, a section of the Bayeux Tapestry depicting the departure of William from St Valery for the invasion of England, initiated by Tina Greene, (the designer of the Battle Tapestry), during a week-long visit to exhibit the Battle Tapestry in 2018, was unveiled by the Mayor of St Valery and Tina. Tina also presented the Mayor with a 1/3 sized copy of the Battle Tapestry, a copy of her book '**The Battle Tapestry: a visual history of the Town of Battle 1066-1115**' and a leaflet in French describing each of the 8 scenes depicted in the tapestry.

Tina Greene, M. Daniel Chareyron (Mayor of St. Valery), Mme. Marie-Agnès Landié (President of the St Valery Twinning Association)

Neighbourhood Plan Implementation, Monitoring & Review Sub Committee

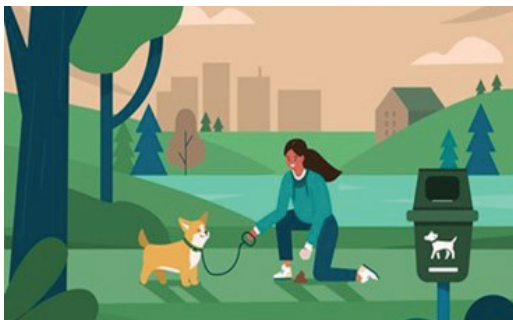
Battle Neighbourhood Plan

We are seeking an additional resident member for the quarterly meetings that report to the Council's Planning & Transport Committee.

This is an **important task group** to ensure that the made Plan is being used properly by both the Town and District Councils and to identify any recommendations for changes to policies.

If you would like to know more about this role, please contact the Clerk.

Polite reminder to all dog walkers



There has been an **increase in dog excrement on our streets** and in our twittens and we would urge our residents to take small "poo bags" out with you when walking your dog and to clear up after your pet. We know that many, many dog owners are careful and conscientious but it is becoming quite noticeable.

Unsuspecting residents walk this dirt into cafes, shops and community venues; and, apart from the mal-odour and the unsightliness, it is a health hazard.

Poo bags can be deposited in most litter bins in the High Street and specific bins can also be found in the recreation ground and at the top of Uckham Lane / Virgins Lane. Please use these and don't leave your poo bag hanging in a tree or hedge.

Join the first ever Wild About Dark Skies Festival in February 2023!



Did you know the High Weald Area of Outstanding Natural Beauty has some of the darkest skies in the South East?

Communities across the AONB will celebrate their unique and historic view of the stars at the first ever Wild About Dark Skies Festival, running **Saturday 18 – Sunday 26 February 2023**.

Free events will take place throughout the week in Battle, Burwash, Crowhurst, Etchingham, Ticehurst and Wadhurst, and **everyone is welcome!**

Come along and enjoy:

- Planetarium shows
- Astronomy demonstrations
- Special guest speakers
- Dark skies walks
- Light pollution workshops
- Dark skies storytelling for children
- And much more...

As well as celebrating the High Weald's dark skies, the Festival also **aims to raise awareness about the negative impacts of light pollution** – including wildlife, climate change and our own wellbeing – and provide some tips and advice for how we can all do our bit to reduce it.

Battle will host the **'roadshow' on Saturday 25 February** with events and activities for all the family taking place at **Battle Memorial Hall**.

So put the dates in your calendar and keep your eyes peeled on social media and on the High Weald AONB website (www.highweald.org/news) for more updates.

The Wild About Dark Skies Festival is a collaboration between local Wild About groups in Battle, Burwash, Crowhurst, Ticehurst and Wadhurst; East Sussex and Wadhurst Astronomical Societies; High Weald AONB Partnership; International Dark Skies and Dark Sky Lighting. It is kindly supported by Sussex Lund.

How can I help?

If you would like to help volunteer during these events please contact: Samantha Nicholas, AONB Dark Skies Coordinator: info@highweald.org

So what are dark skies?

Dark skies are defined by the Oxford English Dictionary as "places where the darkness of the night sky is relatively free of interference from artificial light."

Light pollution today means that less than 10% of the UK population can enjoy a view of our own galaxy, the Milky Way. To make sure future generations can see the wonder of the stars, we all need to reduce light pollution.

Some dark skies facts:

Wildlife: Research on light pollution shows it has an impact on wildlife as they often cannot forage for food, find their mate or they use up too much energy as they think it is daylight.

Health: Light pollution affects our circadian rhythms and is linked to poor sleep patterns, cancer and mental health problems.

Safety: Did you know extra lighting does not always protect you from burglaries?! It helps criminals hide in the shadows.

Message from your County Councillor

I'd like to take this opportunity to **update you about the situation with guests from Ukraine**. The County has received 1,127 guests which is 82% of those who are expected. Most are settling in well and the system for distributing payments appears to be working. There is help with all aspects of settling in on the County Council website. 410 children have been found school places using the flexible admissions policy which places them close to family in their new communities. English language lessons are being offered to help guests work in jobs at the level of their qualifications. Unfortunately, hosting can present challenges, which were not anticipated and the County Council will try to help to resolve issues wherever possible. If hosts are experiencing difficulties please let the County Council know and ask for help by emailing ukraine@eastsussex.gov.uk. Our guests may also be experiencing difficulties and free mental health advice is available from the NHS, the place to start is www.sussexpartnerships.nhs.uk. It is advised that guests should apply for Universal Credit as soon as possible and those wishing to move on and rent accommodation should use the recognised property apps.



The pilot scheme **not to mow some verges** is being reviewed. Not only does this save the Council money it also benefits biodiversity.

Safety, however, is still paramount and junctions will be mown if growth on the verge is restricting visibility and is therefore dangerous.

The long awaited and much needed **safety improvements to Battle Hill** are progressing slowly. The pedestrian crossing and necessary other work has now been designed and is approaching the consultation stage. If this does not lead to a substantial redesign, the implementation is expected mid 2023. I have asked that the work is not scheduled during term time to reduce, as far as possible, the impact on the High Street.

I send best wishes for Christmas and a Happy New Year!

Cllr Kathryn Field

Keeping Battle Tidy

During June and July, residents and businesses worked hard to tidy up, clean and de-weed areas of our Town for the South and South East in Bloom judging. Sadly the autumn winds have been blowing litter and other detritus around the town and some areas are looking a little uncared for.

Despite a resident receiving **a fine of £150 for dropping a cigarette end in the High Street**, there is evidence that this littering continues.

A **group of enthusiasts have begun working to maintain the sensory garden and wildflower areas** at North Trade Road recreation ground and also at the Cemetery in Marley Lane. Please enquire at the Council offices at the Almonry for details of when these events take place.



**Would you be willing to give up an afternoon to help
clean our streets and amenity areas?**

Message from your MP

As I look back over this year, **a lot has happened in those twelve months** which impacts us locally. This time last year, we were protecting ourselves from Covid so we could spend Christmas with family and friends. There will be no such restrictions this year as we are now able to live with the virus.



The **war in Ukraine** has been damaging globally but devastating for Ukrainians. As a nation we have supported Ukraine in their fight and, locally, we **have welcomed families from Ukraine to safety in our homes and communities** across East Sussex. Battle was no exception. During the **Remembrance Day Service** in Battle this year, as we remembered all those who gave their lives to protect our nation and our freedoms, I also reflected on the war in Ukraine where men and women are fighting to protect their freedoms against Putin's tyranny. **The service in Battle was dignified and moving** with contributions from Battle Abbey School Choir, Claverham Community College, Battle & Langton and Netherfield Primary Schools.

Earlier this year, Battle residents were **badly impacted by Storm Eunice**. Whilst we all understand that utilities cannot be restored overnight in the face of such damage, I believe that the response from utility **companies and local resilience partners fell short**. Last week, I called a meeting with the Sussex Resilience Forum (SRF) for Sussex MPs to find out what lessons had been learnt from Storm Eunice and what can be done better. I want to reassure you that I will continue to work on this matter until I am confident that **rural communities and towns are better supported during major (and minor) incidents**.

The recent **cost of living increases and hike in energy costs** which we are all facing are a real worry for our communities. The government is doing as much as it can to protect households from the impact. As ever, Battle is providing a supportive and practical response by opening warm places during the week and on some Saturdays. Thank you to all those who have made this possible.



The Battle **community and it's businesses are really something to be heralded**. It is great to see that residents also want those businesses which go the extra mile for their communities and customers to be recognised for doing so. A great example is **Netherfield Community Shop, Post Office and Café**, run by Janette and Nichola McAulay. I recently visited with Cllr Hazel Sharman to congratulate them on being nominated for a '**Rural Oscar**' in the **Countryside Alliance Awards** by their customers.

Local businesses are the very heart of our communities. **Please do support the wonderful retailers, pubs and cafes in Battle** when out and about doing your Christmas shopping this year. Battle has a vibrant high street full of independent traders who need your support in these challenging times. **Christmas shopping is a really enjoyable experience when you shop local rather than online**.

**I should like to thank everyone who gives freely of their time to support
Battle residents in a wide variety of ways and
I would like to wish you all a very Happy Christmas.**

Huw Merriman, MP Battle & Bexhill

Home Library Service



If you **can't get to the library** due to ill-health, disability or caring responsibilities the library can come to you.

We can arrange for you to have your library **books delivered to your home** on a regular basis, at a time convenient for you.

We offer books in standard and large print and also have a wide range of audio books on CD.

This service is free.

After you have completed the enquiry form, we will contact you by phone or email to **assess your eligibility**.

You can also call into **Battle library or ring 0345 60 80 196** to make an enquiry about this service

We deliver the service through our team of Home Library Service volunteers. We will match you with someone and make them aware of what you like to read, making them your link to the library.

Interested in becoming a Home Library Service volunteer?

As a home library service volunteer you can give back to your local community. You'll choose and deliver books to people who have difficulty leaving home. This could be due to mobility problems or caring responsibilities.

Find out more about the [Home service volunteering role](#).

East Sussex
County Council



**Library and
Information
Service**

Can you help to end Period Poverty?

Period Poverty affects 1 in 7 girls and women in the UK with many missing work and school because they cannot afford period products. Eastbourne, Hastings, Hailsham and Newhaven **libraries are offering free, donated period products** to anyone who needs them.

FREE PERIOD PRODUCTS

PERIOD BANK

Free tampons, pads and reusable products.
Come back as many times as you need to

#EndPeriodPoverty



There are donation bins in all East Sussex Libraries including Battle library

HELP US TO #ENDPERIODPOVERTY

Please donate new
tampons, pads and
reusable period
products

Thank you for your support

DONATE IN A LIBRARY OR ONLINE

PERIOD BANK



Your help is needed to tackle period poverty, and East Sussex Libraries are asking for donations of tampons, pads, and reusable period products at all our libraries.


Advertisements

Paid advertisements in Battle Town Council publications in print, online or in any electronic formats, do not constitute an endorsement by Battle Town Council.

You don't need to be a
LORD or LADY
to stay with us in
the delightful tranquil village of
Crowhurst, near Battle TN33.

Edendale Lodge Carehome
offers
AFFORDABLE
Residential, Respite & Dementia Care
with a vibrant outlook and lots of activities for
our residents

Enquire for a discreet and informative chat with
Zoe our Manager
01424 830295
edendale@belmonthealthcare.co.uk

 **Belmont Healthcare**
Edendale Lodge, Crowhurst

belmonthealthcare.co.uk

**Why use a
cattery when
you can use
Happy Cats?**

We offer 30-45 minute visits
full of pampering and play to your cat
in the comfort of its own home.
DBS checked, fully insured and have
been spoiling cats for 12 years!

www.happycatscatsitting.co.uk





Helen Hyde, Happy Cats Cat Sitting,
24 Battle Gates TN33 0JD
T: 01424 777146 T: 07506 721866
E: hello@happycatscatsitting.co.uk

Haine & Son
Funeral Directors


C.P.J. Field.
More than a funeral director since 1690.

19 Market Square, Battle TN33 0XB
01424 236 000

Eastbourne 01323 727 801 | Polegate 01323 489 127
Hailsham 01323 840 049
www.cpjfield.co.uk

Heringtons
SOLICITORS

We're here to help

*Specialising in helping plan for later life
Preparing wills for you and your family
Guiding you following a bereavement
Helping you to move home
Supporting families in their legal affairs
Assisting with civil disputes*

Offices at Battle, Bexhill, Hastings, Rye and Eastbourne
Tel: **01424 772401** heringtons.com

To advertise on this page contact the Town Council at enquiries@battletowncouncil.gov.uk

Council Meeting Dates

December 2022

Tues 6 th	Environment
Tues 13 th	Planning and Transport
Tues 21 st	Full Council

January 2023

Tues 3 rd	External Relations & Town Development
Tues 10 th	Planning and Transport
Tues 17 th	Full Council
Tues 24 th	Finance & General Purposes

February 2023

Tues 7 th	Environment
Tues 14 th	Planning and Transport
Tues 21 st	Full Council

Passionate about your Community?

Do you want to help make a long-lasting change?

Do you have innovative ideas for the council?

Do you have concerns about a specific issue and want to do something about it?

If this is you, then we need you. We need people from all backgrounds and experiences who reflect their community to put themselves forward for election. Following a successful, and challenging four years, there will be vacancies at the next election.

Local Elections in May 2023.

Please look for more information in the Annual Report or contact the Clerk: clerk@battletowncouncil.gov.uk

Make a change and become a Councillor.

All Council Standing Committee **meetings take place at The Almonry**, High Street and commence **at 7.30pm**, unless otherwise stated on the Agenda. **Members of the public are welcome.**

Agendas and Minutes of all Battle Town Council meetings are posted on the website, together with information about the Council and its Standing Committees at: www.battletowncouncil.gov.uk

Contact Your Councillors

Cllr Andrew Barton CllrABarton@battletowncouncil.gov.uk	Cllr Margaret Kiloh CllrMKiloh@battletowncouncil.gov.uk
Cllr Sue Burton CllrSBurton@Battletowncouncil.gov.uk	Cllr Allan Russell CllrARussell@battletowncouncil.gov.uk
Cllr Vikki Cook CllrVCook@battletowncouncil.gov.uk	Cllr David Russell CllrDRussell@battletowncouncil.gov.uk
Cllr Claire Davies CllrCDavies@battletowncouncil.gov.uk	Cllr Hazel Sharman CllrHSharman@battletowncouncil.gov.uk
Cllr Glenna Favell CllrGFavell@battletowncouncil.gov.uk	Cllr Paul Stripp CllrPStripp@battletowncouncil.gov.uk
Cllr Jill Gygell CllrJGygell@battletowncouncil.gov.uk	Cllr Dale Wheeler CllrDWheeler@battletowncouncil.gov.uk
Cllr Margaret Howell CllrMHowell@battletowncouncil.gov.uk	We are pleased to be at full complement of Councillors at present.

Battle Town Council

The Almonry, High Street, Battle, TN33 0EA

01424 772210 enquiries@battletowncouncil.gov.uk